



Forestry Commission

Scotland's Forest Industries

COST Action E53

Edinburgh
5th May 2010

Roger Coppock
Head of Specialist Advisors

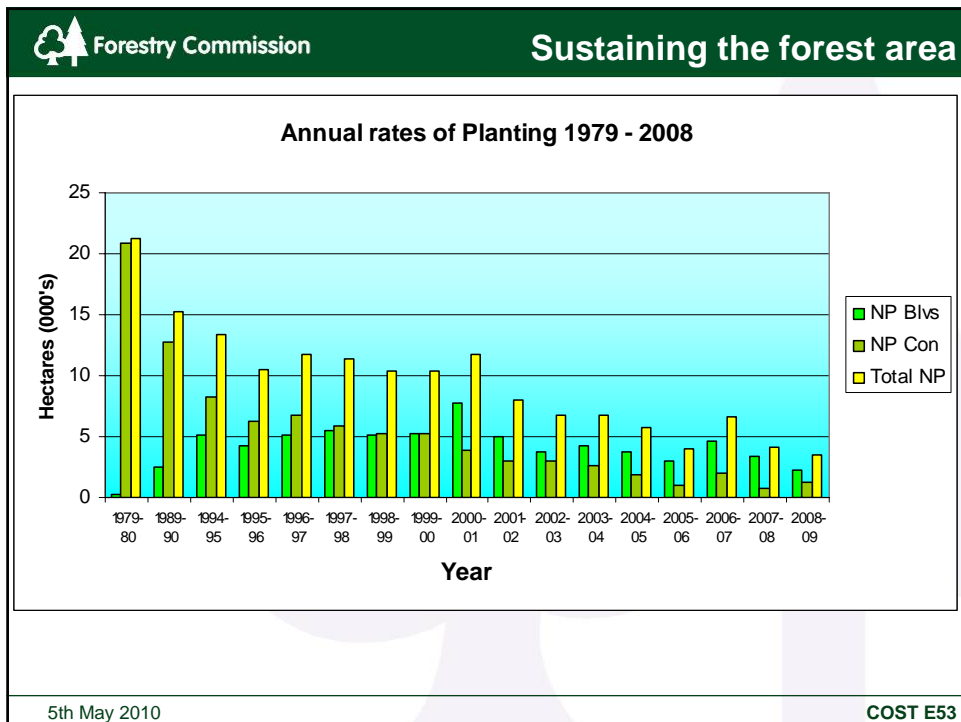
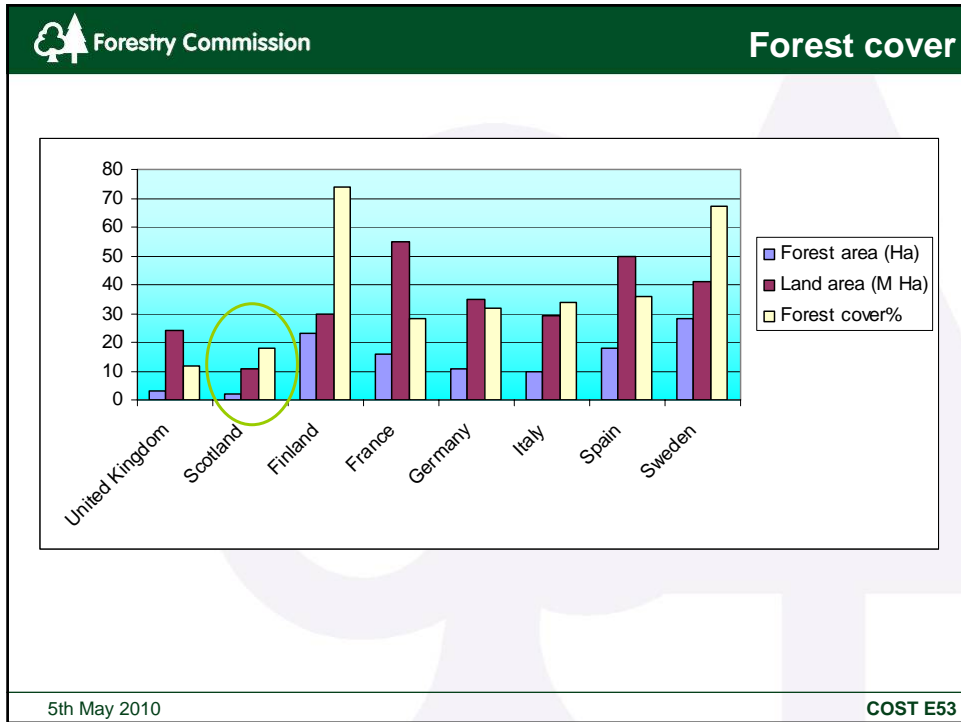


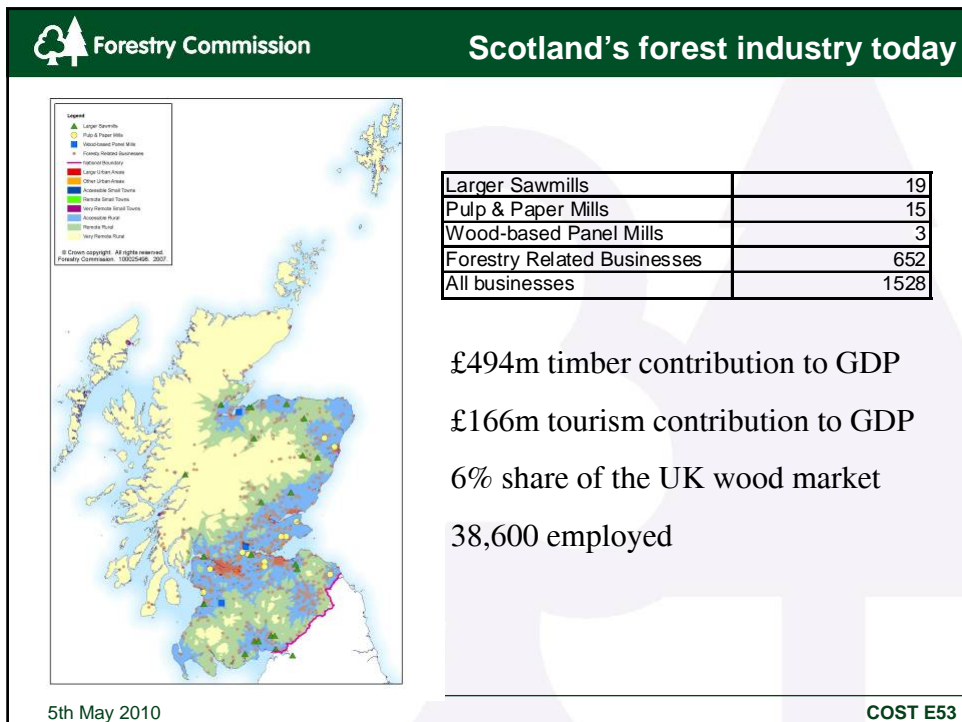
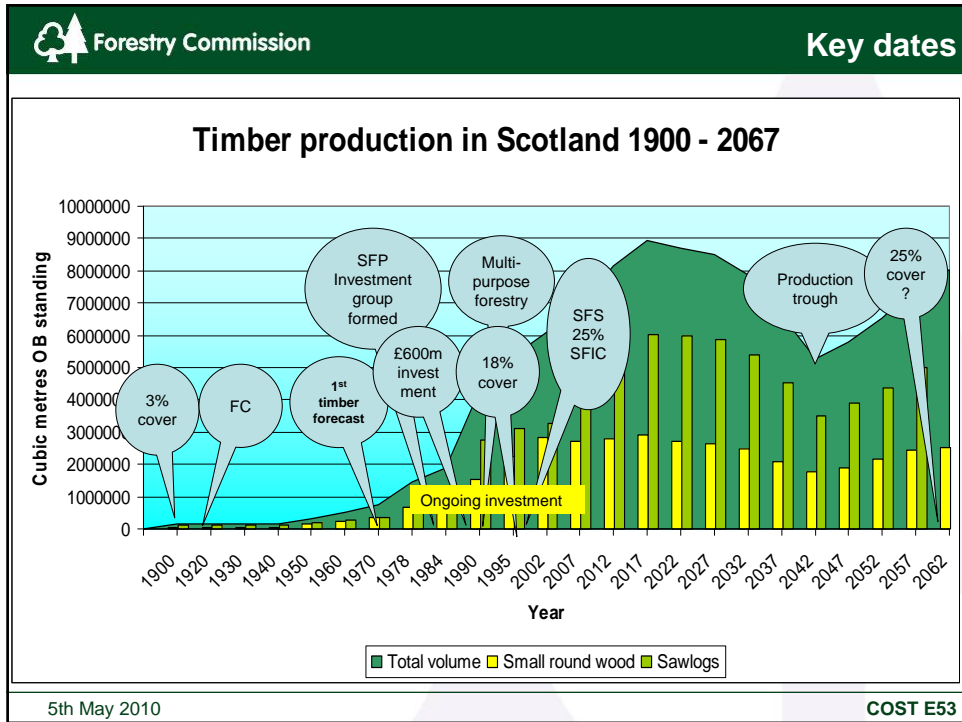
Forestry Commission

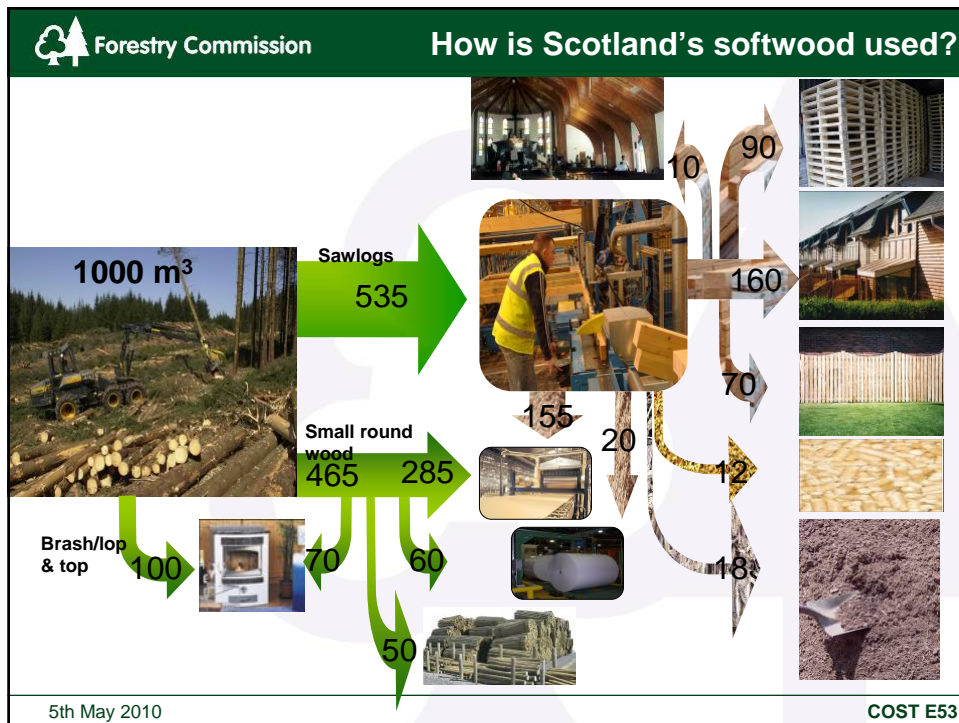
Introduction

- Scottish forestry in a European context
- Scotland's forest history
- Industry today
- Forest research
- Current research
- Future challenges

5th May 2010 COST E53



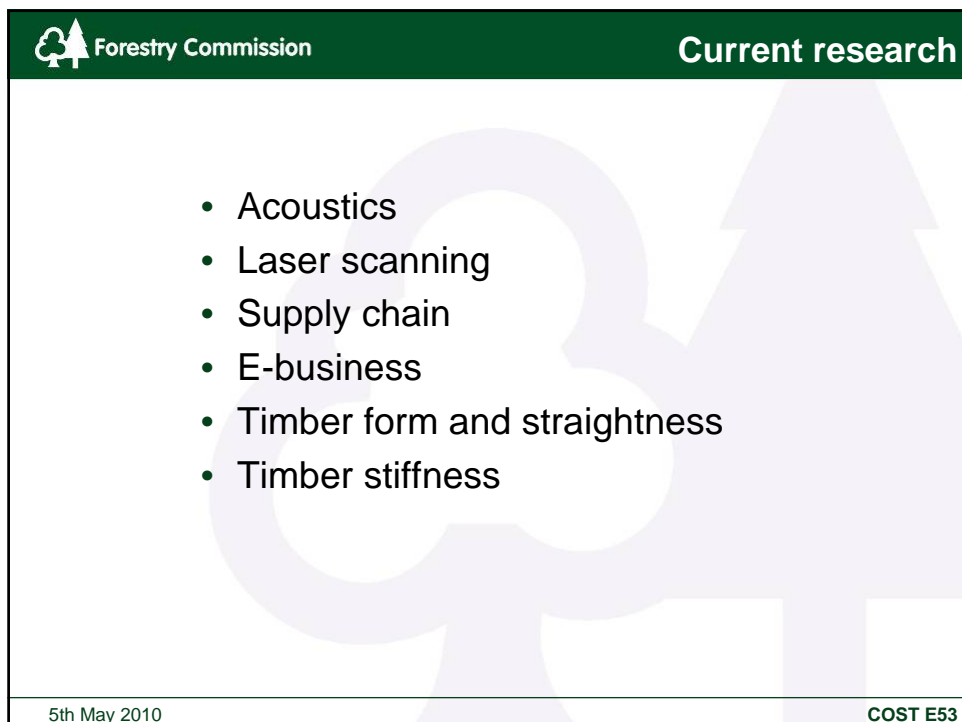
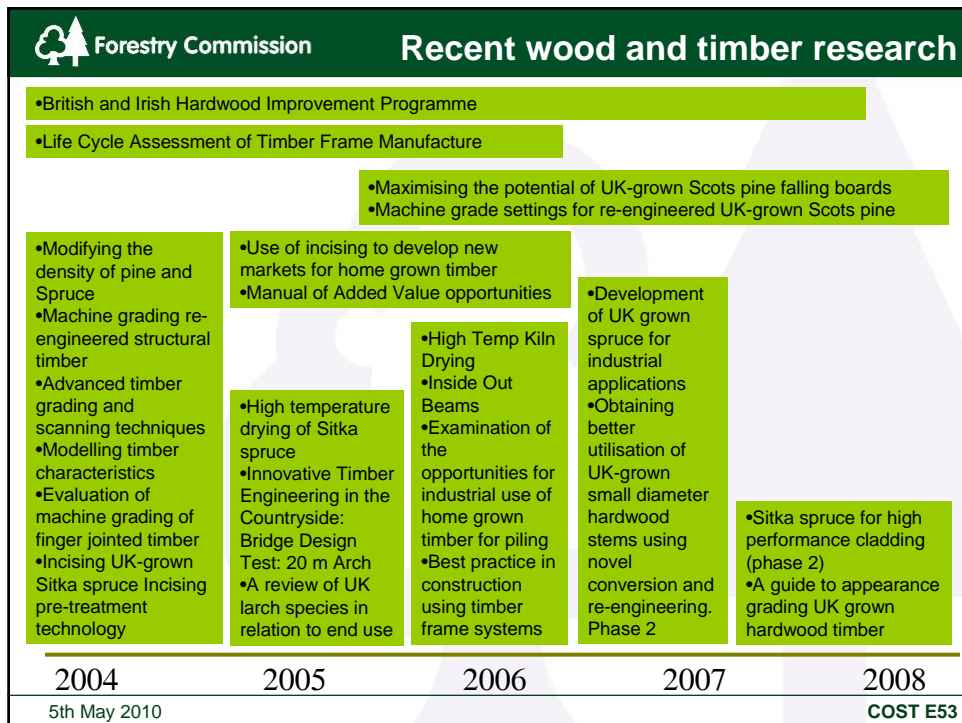





Forestry Commission **Forest research**

- Early research was confined almost exclusively to species selection, establishment and nursery work, with experiments in peatland research in northern Scotland.
- The 40's saw the beginning of the expansion of the Commission's research work into biosecurity, nutrition, yield modelling, and soils.
- In the 50's tree breeding work started to improve form and yield
- In the 90's the FC started to commission research into wood products to support industry growth and development
- Late 90's and early 2000's saw development of new models for predicting wood properties
- Today much of this is collaborative with the FC, industry and universities, through programmes such as SIRT
- Climate change has brought the wheel full circle


5th May 2010 **COST E53**



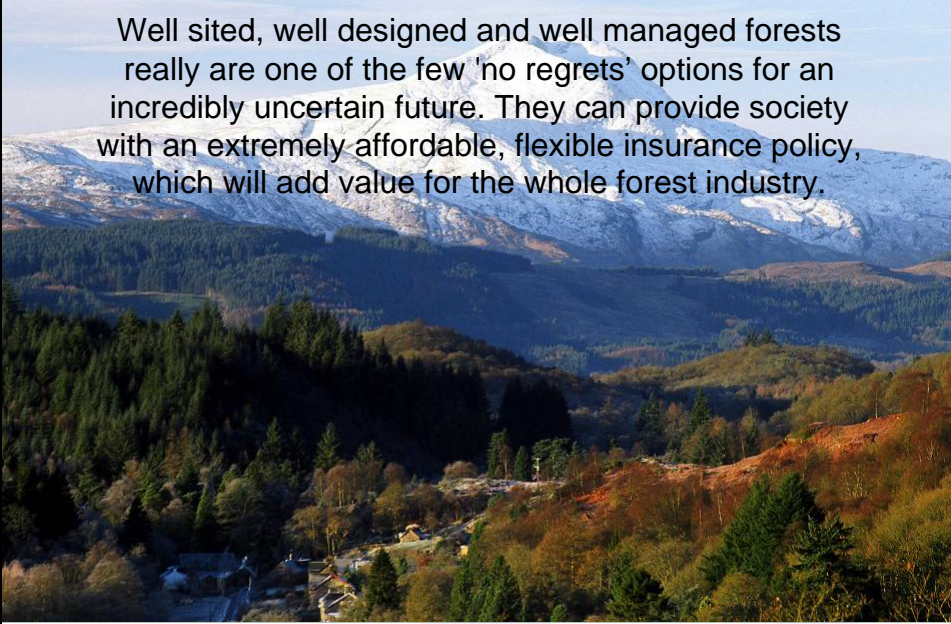
 Forestry Commission **Future challenges**

- Adding greater value
- Exploring new markets
- New products and processes
- Concerted research effort across sector
- Cross sectoral approaches
- Increasing timber's relevance to society
- Understanding the carbon benefits
- Adapting to a changing environment

5th May 2010 COST E53

 Forestry Commission **A final thought**

Well sited, well designed and well managed forests really are one of the few 'no regrets' options for an incredibly uncertain future. They can provide society with an extremely affordable, flexible insurance policy, which will add value for the whole forest industry.



5th May 2010 COST E53